



Autonomous TMA Truck (ATMA) Potential Uses

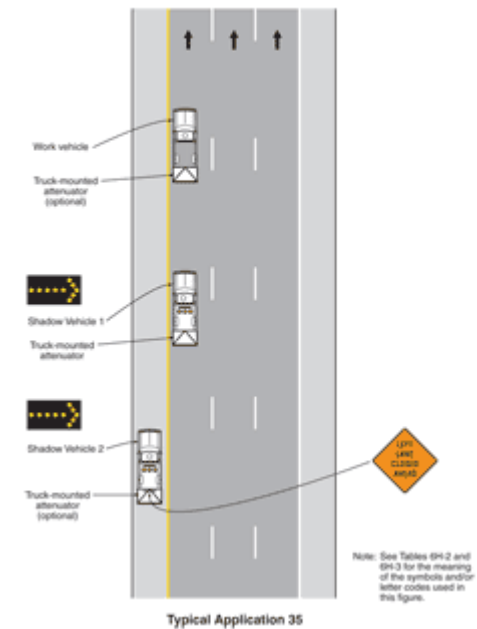




Ideal for...

- Any mobile maintenance operation can eventually benefit
- Linear operations at slow speed offer best chance to use the technology in current form

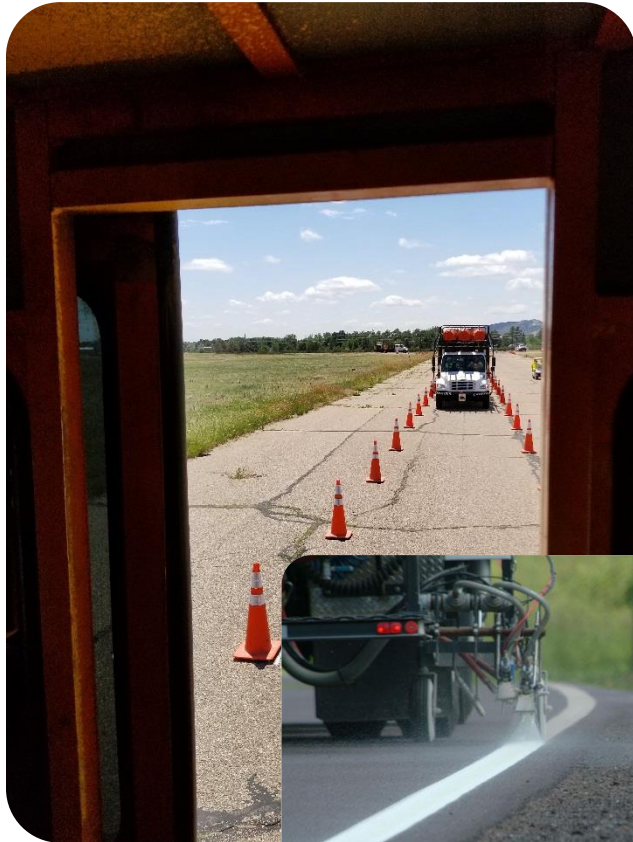
Figure 6H-35. Mobile Operation on a Multi-Lane Road (TA-35)





Current CDOT Use

- Testing and implementation focused on striping operations
 - 7mph operation
 - Slow speed reduces risk of using autonomous system
 - Large speed differential with traffic poses danger to a driver
 - On certain roads can be very simple
 - Paint truck provides excellent rearward view for monitoring ATMA





Possibilities

- CDOT has considered applicability to
 - Sweeping
 - Mowing
 - Weed spraying
 - Setting traffic control
- Each operation will have its own specific set of system changes needed



Beyond the TMA

- The driverless tech in the ATMA could be applied to other areas in the future
 - Any operation that involves vehicles driving the same paths





How would you use it?

