



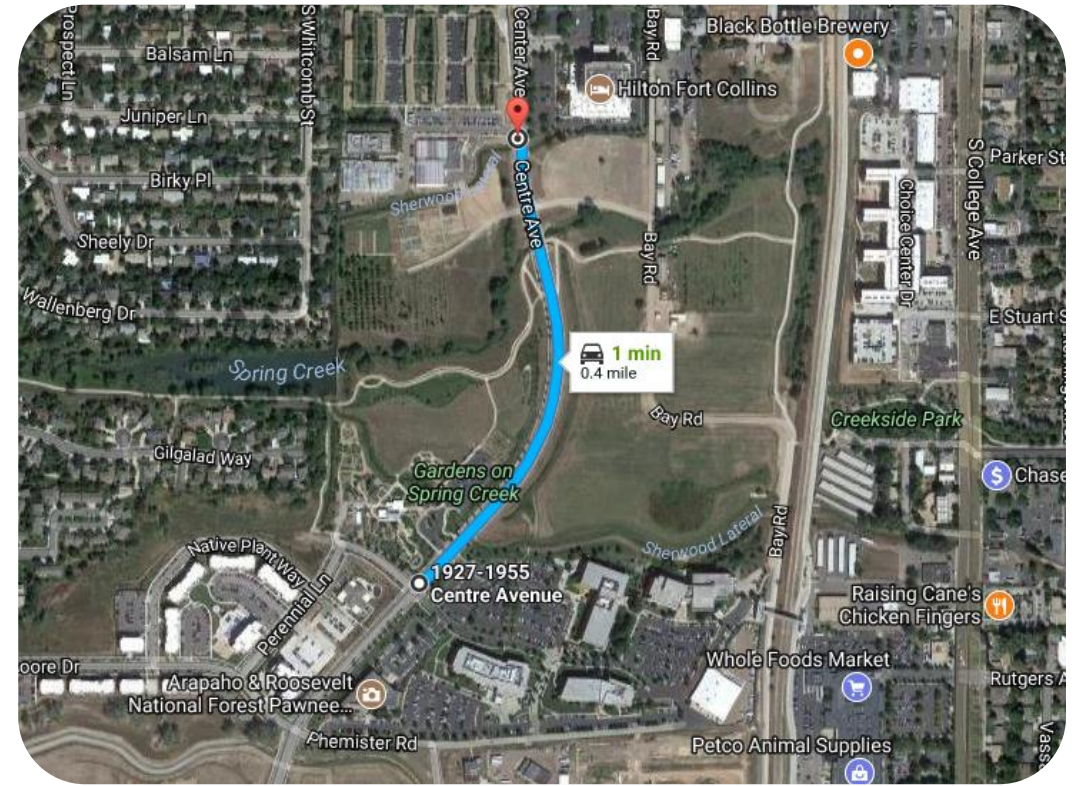
Autonomous TMA Truck (ATMA) Operational Capabilities





First Operational Use

- August 18th
- 0.4 mile stretch of road in Fort Collins, CO
- Striped center lines and edge lines
- ATMA autonomously followed paint truck
- Livestreamed operation



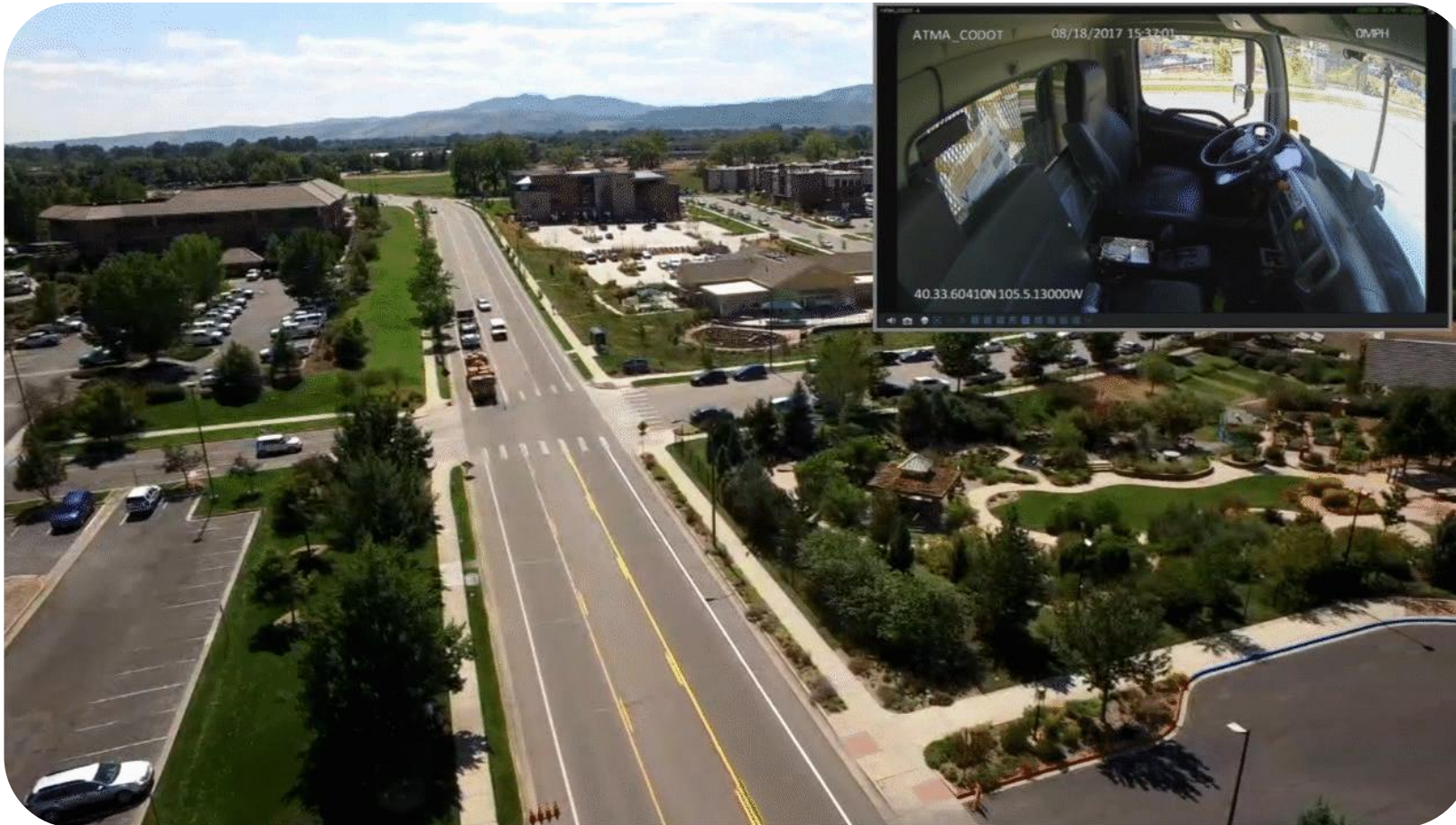


First Operational Use





Reaction to Traffic





Current System Limitations



- Constant gap
- Traffic lights
- Overpasses/Tunnels
- Turn signal activation
- Radar around corners



Current Operational Capabilities

- Follows lead vehicle with high accuracy
- Allows for quick and safe emergency stop from lead vehicle
- Provides protection to a striping operation within certain conditions
 - No GPS denied environments
 - No complex maneuvering through town, etc.



Questions?

