

CHANNELIZING DEVICE SPACING (FEET)	
MPH	TANGENT
50 / 70	40
40 / 45	30

G20-2A
48" x 24"
BIO

DOWN STREAM
OR
TAPER TO SHOW END
OF WORK AREA

END
ROAD WORK

RECOMMEND CLOSING ADJACENT
LANE TO MAINTAIN BUFFER SPACE

SIGN SPACING = X (FEET) (1)		
FREeways & EXPRESSWAYS	55/70 MPH	1500±(OR AS PER MUTCD)
RURAL HIGHWAYS	60/65 MPH	800±
RURAL ROADS	45/55 MPH	500±
RURAL ROADS & URBAN ARTERIALS	35/40 MPH	350±
RURAL ROADS, URBAN ARTERIALS RESIDENTIAL & BUSINESS DISTRICTS	25/30 MPH	200± (2)
URBAN STREETS	25 MPH OR LESS	100± (2)

ALL SIGNS ARE 48" X 48" BLACK ON ORANGE UNLESS OTHERWISE DESIGNATED.

- (1) All spacing may be adjusted to accommodate interchange ramps, at-grade intersections, and driveways.
- (2) This spacing may be reduced in urban areas to fit roadway conditions.

(SAMPLE MESSAGE)

PCMS	
1	2
LANE CLOSED	1 MILE AHEAD
1.5 SEC	1.5 SEC

FIELD LOCATE 1 MILE ± IN
ADVANCE OF LANE CLOSURE TAPER.

LEGEND

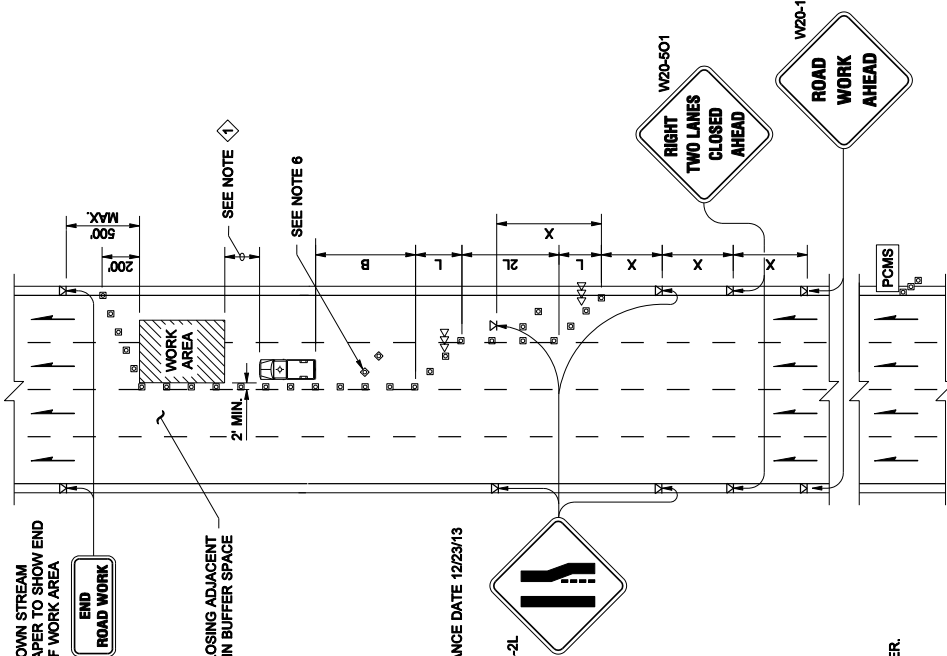
- SIGN LOCATION
- ▷▷ ARROW PANEL
- CHANNELIZING DEVICES
- PROTECTIVE VEHICLE - RECOMMENDED
- PORTABLE CHANGEABLE MESSAGE SIGN

BUFFER DATA										
LONGITUDINAL BUFFER SPACE = B										
SPEED (MPH)	25	30	35	40	45	50	55	60	65	70
LENGTH (FEET)	155	200	250	305	360	425	495	570	645	730
PROTECTIVE VEHICLE WITH TMA ROLL-AHEAD DISTANCE										
TYPICAL PROTECTIVE VEHICLE TYPE WITH TMA	TYPICAL PROTECTIVE VEHICLE (WITH TMA) LOADED WEIGHT (LBS)									STATIONARY OPERATION (FEET)
4 YARD DUMP TRUCK, SERVICE TRUCK, FLAT BED, ETC.	MINIMUM WEIGHT 15,000 LBS. (MAXIMUM WEIGHT SHALL BE IN ACCORDANCE WITH MANUFACTURER RECOMMENDATION)									30 MIN.
ROLL-AHEAD STOPPING DISTANCE ASSUMES DRY PAVEMENT										
① A PROTECTIVE VEHICLE IS RECOMMENDED REGARDLESS IF A TMA IS AVAILABLE. IF NO TMA IS USED, THE PROTECTIVE VEHICLE SHALL BE STRATEGICALLY LOCATED IN THE FIELD TO SHIELD WORKERS AND NO ROLL-AHEAD DISTANCE IS SPECIFIED.										

MINIMUM TAPER LENGTH = L (feet)										
Lane Width (feet)	25	30	35	40	45	50	55	60	65	70
10	-	-	-	270	450	500	550	-	-	-
11	-	-	-	295	485	560	605	660	-	-
12	-	-	-	320	540	600	660	720	780	840

NOTES

- Protective vehicle recommended - may be a work vehicle.
- Contact region Traffic Office for work hour restriction.
- Recommend extending device taper (L/3) across shoulder.
- Devices should not encroach into adjacent lanes.
- PCMS recommended.
- Use transverse devices in closed lane every 1000'± (recommended).
- Traffic safety drums recommended for all tapers on high speed roadway.
- When used, device spacing for the downstream taper should be 20' O.C.



DOUBLE-LANE CLOSURE FOR MULTI-LANE ROADWAYS
TCP 4

FILE NAME	S:\Designs_R P& S\1-F-Standard\2-Plan Sheet\Library\Work Zone\plans\WZ4.dgn	REGION	STATE	FED. AID PROJ. NO.
TITLE	DOUBLE-LANE CLOSURE FOR MULTI-LANE ROADWAYS	NO.	10 WASH	
DATE	4/28/2006	JOB NUMBER		
PLOTTED BY	SUJ/KOM	CONTRACT NO.		
DESIGNED BY		LOCATION NO.		
ENTERED BY				
CHECKED BY				
PROJ. ENGR.				
REGIONAL ADM.				

Washington State
Department of Transportation

WZ-4
SHEET
OF
SHEETS

TRAFFIC CONTROL PLAN